



HONG KONG SQUASH  
LEAGUE  
香港壁球聯賽

# SUMMER SQUASH LEAGUE

夏令壁球聯賽

2024

DATE 日期  
11/6 - 28/9/2024

---

DEADLINE 截止日期  
15/4/2024

主辦機構  
ORGANIZED BY



資助機構  
SUBVENTED BY



# SUMMER SQUASH LEAGUE

夏令壁球聯賽

2024



Summer Squash League 2024 will commence on **11 June 2024**. *The closing date for team application is **15 April 2024***. Late applications will not be considered.

Please read the following carefully before filling in the Entry Form. The form (as attached) must be fully completed. Entry forms with missing or inadequate information will be rejected.

## Format of the League

There will be 10 divisions in the Main League and one division for Ladies. Div 3 and below are split into 2 or 3 groups on different nights.

A maximum of 12 teams will be accepted into each division or group. Each team will play against other teams in the same division/ group **ONCE** during the season, except those divisions/ groups that consisted of less than 10 teams. For those with 9 teams or below, each team will play against other teams in the same division/ group **TWICE**.

The league fixtures and match venues are to be arranged and decided at the full discretion of the League Office.

Trophies will be presented to the top 3 teams in each division/ group – Division Champions, the 1st and 2nd Runner-ups, provided that the respective division/ group has 8 teams or more. For those with fewer than 8 teams, only the Division Champions and the 1st Runner-ups will receive trophies.

## Provisional Timetable

Summer Squash League 2024 will have 11 divisions and Div 3 and below are split into 2 or 3 groups on different nights. The provisional timetable is as follows,

	Division / Group			
Mon	1	4A	5A	Ladies
Tue	2	4B	7A	
Wed	3A	6A	8A	
Thur	6B	7B	8B	
Fri	3B	5B	9A	10A
Sat	9B	10B		

Notes:

- 1) On Mon-Fri, matches will be scheduled at 7pm-10pm. On Sat, matches will be scheduled at 5pm-8pm.
- 2) Depending on the number of entries and availability of courts, the Squash League Sub-committee (SLSC) may make adjustments to the timetable.
- 3) For those divisions with 9 teams or below, two matches might be scheduled for each team in a week.

## Team Entry Fee & Provisional Membership Fee

*The Team Fee for this season is HK\$1,500 per team.* A crossed cheque should be prepared and payable to "Squash Association of Hong Kong, China" together with the entry form and sent to the League Office **on or before 15 April 2024**.

For players who are not current Squash Association of Hong Kong, China (SAHKC) members, they are required to apply for Summer League provisional membership. The membership fee for ordinary member and junior member are HK\$175 and HK\$35 respectively. The completed membership form and fee should be submitted with the team application.



## Match Format

Division	No. of Rubbers	Scoring (The best of 5 games)	Points for each Match
Div 1-10 Ladies	3	PAR – 11	<ul style="list-style-type: none"><li>- 1 point per rubber scored and 1 extra point for match winner.</li><li>• Example: in Div 1, Team A beats Team B by 2 rubbers to 1. Team A gets 3 points (i.e. 2 points for rubbers and 1 extra point for winning the match) and Team B gets 1 point.</li></ul>

## Eligibility of Players

Players must be fully paid-up SAHKC members or Summer League Provisional Member. The Team Convenor is responsible to collect and pay the Summer League provisional membership subscription for his/her players together with the team entry fee when the team application is submitted.

## Registration and Seeding of Players

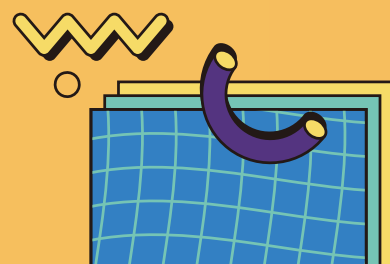
Teams are required to register a **minimum of 3 players** and up to a maximum of 6.

Full details of all player SAHKC Membership No. (if any). It is the responsibility of the Team Convenor to register his/ her players according to their playing ability and standard, and to ensure that he/ she is eligible to play in the division that the team has applied for. The SLSC has full discretion to accept or reject any player or team registration.

A team should enter a division based on their players' recent participation in the Hong Kong Squash League. The following shows the reference to the participation of Summer Squash League:

Division of Summer Squash League	Open to players who participated in Hong Kong Squash League 2023/24
1	Div 2-3 or below
2	Div 4-5 or below
3	Div 6-7 or below
4	Div 8-9 or below
5	Div 10-11 or below
6	Div 12-13 or below
7	Div 14-15 or below
8	Div 16-17 or below
9	Div 18-19
10	Non-league player
Ladies	Ladies 3 or Non-league female player

Confirmation of team order has to be submitted to the League Office **on or before 3 May 2024**. In case of no response from the Team Convenor before the aforementioned deadline, the provisional order stated in the entry form will be taken as confirmed.



## Number of Draw ups

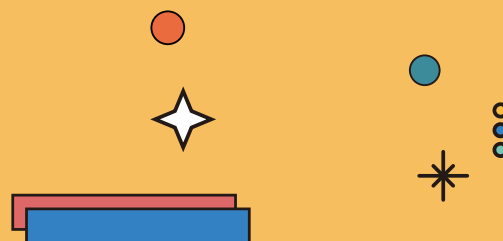
layers are allowed to be drawn up from a lower division to play for a higher division. For example, a player can be drawn up from Team ABC in Div 5 to Team XYZ in Div 3.

Each player is allowed to be drawn up **ONCE** in the Summer Squash League. If a player has been drawn up to a team in a higher division for more than 1 time, he/ she cannot stay in his/ her original division anymore.

## Match Venues

The match venues will be assigned by the League Office. The following venues will be used for Summer Squash League 2024,

<b>HKSC</b>	Hong Kong Squash Centre
<b>CSPSC</b>	Cornwall Street Squash & Table Tennis Centre
<b>PHSSC</b>	Pei Ho Street Sports Centre
<b>KCSC</b>	Kwun Chung Sports Centre
<b>HRSC</b>	Harbour Road Sports Centre



Depending on the number of entries, the League Office may change the venues or move some league matches to other LCSD venues.

## Referee Refresher Clinic

All new players are required to attend a Referee Refresher Clinic organized by SAHKC **on or before 11 July 2024**.

The details of Referee Refresher Clinic will be announced and issued to Team Convenor via email in due course.

For those who cannot meet the aforesaid attendance requirement, one point per match will be deducted from his/her team scores for each match in which the player has played. All penalty points taken away are irrevocable. It is the responsibility of the Team Convenor to ensure that all his/her players have attended the clinic.

## League Regulations

The latest WSF World Squash Singles Rules will be applied throughout the matches except the aforesaid league regulations outlined in this prospectus. Summer Squash League is subject to the Hong Kong Squash League Regulations and/or other regulations or requirements the SLSC may issue from time to time.

## Liabilities

Teams and their players enter and play in the Summer Squash League at their own risk. SAHKC and the SLSC do not accept any responsibility and shall not be liable for any injury or death or loss arising from participation.

## Name of Team/Abbreviated Name

The League Office reserves the rights to change the team names and abbreviation.

## Enquiries

For enquiries, please contact the League Office:

Miss. Wing Yip, Sports Promotion Officer

Tel: 2869 1083

E-mail: [wing@hksquash.org.hk](mailto:wing@hksquash.org.hk)

Mr. Arnold Tsui, Sports Promotion Manager

Tel: 2810 4086

E-mail: [arnold@hksquash.org.hk](mailto:arnold@hksquash.org.hk)

**All decisions made in the Hong Kong Squash League are rightfully under the full discretion of the SLSC.**

[https://www.hksquash.org.hk/public/index.php/leagues/index/league/Summer/pages\\_id/26.html](https://www.hksquash.org.hk/public/index.php/leagues/index/league/Summer/pages_id/26.html)

